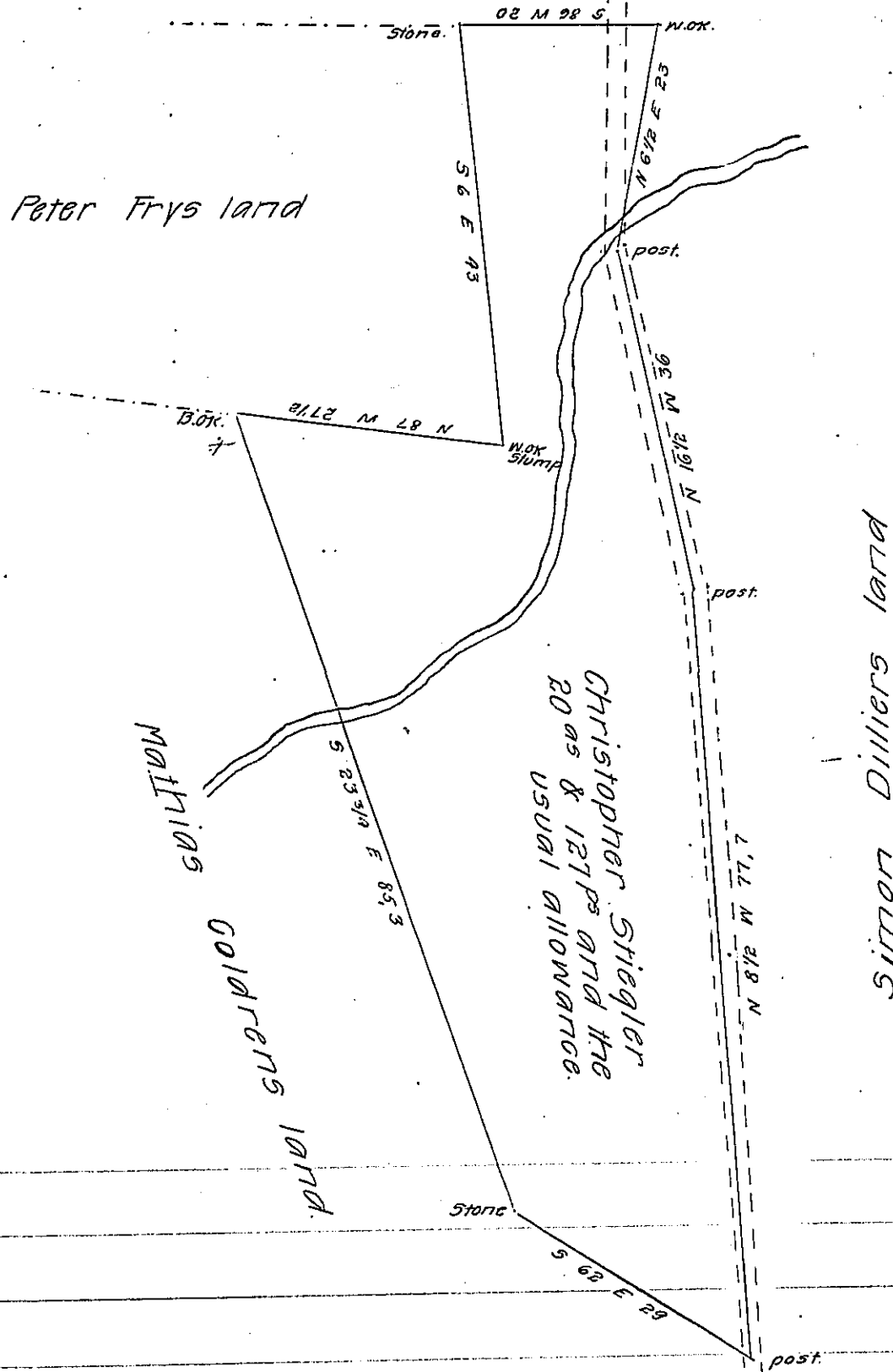


FORM No. 1.



A draught of a piece or tract of land situate in Breck-
 rock Township Lancaster County Containing 20^{ac} & 127^p and the
 usual allowance of six P Cent for roads &c. Surveyed the 10th day
 of August A. D. 1809 For Philip Laush in right of Christopher
 Stiegler It being part of a larger tract of 241^{ac} and the allow-
 ance formerly surveyed unto the said Christopher Stiegler By
 Virtue of a warrant dated the 01th day of September A. D. 1748

By Curtis Ream Authorized

To Andrew Porter Esq^r
 Surveyor General.

pr

Jacob Hiestman D. S.

IN TESTIMONY that the above is a copy of the original remaining on file in
 the Department of Internal Affairs of Pennsylvania, made
 conformably to an Act of Assembly approved the 16th day of
 February 1833, I have hereunto set my hand and caused
 the Seal of said Department to be affixed at Harrisburg,
 this eighth day of February 1907.

Loac D. Brown
 Secretary of Internal Affairs.